

# SURVEY OF INDIA

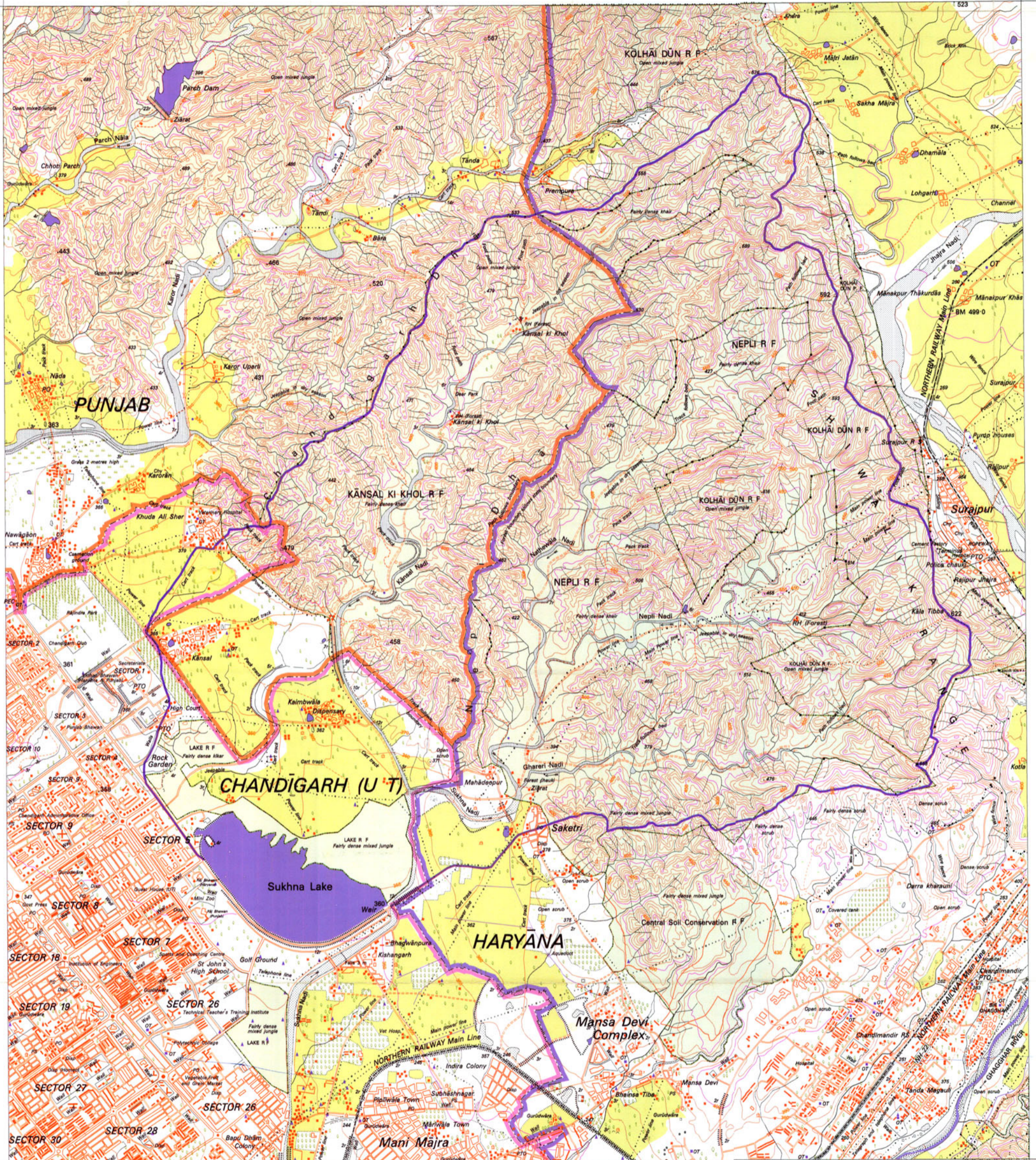
## CATCHMENT AREA OF SUKHNA LAKE

Note : To be used only for the Sukhna Catchment Area purpose.

Surveyed 1995 - 96.

SCALE 1:25,000

CONTOUR INTERVAL 5 METRES IN PLAINS AND 10 METRES IN HILLS



Roads, metalled according to importance; distance stone	20
unmetalled; do.	do.
Cart-track, Pack-track and pass, Foot-path with bridge	20
Bridges with piers; without; Causeway; Ford or Ferry	20
Streams with track in bed; underlined; Canal	20
Dams; masonry or rock-filled; earthwork; Weir	20
River banks; shelving; steep; 3 to 6 metres; over 6 metres	20
Submerged rocks; Shoal; Swamp; Reeds	20
Walls (fence); unlined; Tube-well; Spring; Tanks; perennial; dry	20
Embankments; road or rail; tank; Broken ground	20
Railways; broad-gauge; double single with station; under construction	20
other gauges; do.; do. with distance stone; do.	20
Miscellaneous lines or tramway; Telegraph line; Cutting with tunnel	20
Contours with sub-features; Rocky slopes; Cliffs	20
Land features (Shaded hills and depressions); Shifting dunes	20

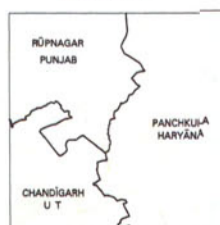
### REFERENCES

OT	Overhead tank
Hosp	Hospital
Disp	Dispensary
Vet Hosp	Veterinary Hospital
Chy	Chimney

Limit of catchment area of Sukhna Lake is shown thus :

(C.S. BAWLI) BRIG.  
 Director  
 Punjab & Chandigarh, GDC  
 Survey of India, Chandigarh

### Administrative Index



Towns or Villages Inhabited; deserted; Fort	20
Hills permanent; temporary; Tower; Antiquities	20
Temples; Chhatris; Church; Mosque; Idgah; Tomb; Grave	20
Lighthouses; Lightship; Buoy; Light; navigated; Anchorage	20
Mine; Vine on trails; Grass; Scrub	20
Palms; palm; other; Flamm; Conifer; Bamboo; Other trees	20
Boundary, international	20
state demarcated; undemarcated	20
district; subdivision; tahsil or taluk; forest	20
Boundary pillars surveyed; unlocated; village junction	20
Height; triangulated station; point; approximate	20
Bench-mark; geodetic; tertiary; canal	20
Post Office; Telegraph office; Combined office; Police station	20
Bungalows; dikh or travellers; inspection; Rest-house	20
Circuit house; Camping office; Forest; reserved; protected	20
Special name; administrative; locality or tribal	20