

# Heritage Trees of **CHANDIGARH**



A Joint Initiative of  
**Chandigarh Tree Lovers & Yuvsatta**  
Supported by  
**Department of Forests & Wildlife**  
Chandigarh Administration  
& Times of India

# The Heritage Trees of Chandigarh

## FOREWORD

There are a number of old and majestic trees in the City Beautiful, Chandigarh which serve as important green landmarks. They help to create a sense of permanence and identity to the place we live in. Many of the trees existed since more than a hundred years, which is well before Chandigarh was conceptualized and are the natural green heritage of the city.

As Chandigarh progresses in terms of increasing urbanization with respect to buildings and concrete structures they pose a danger to losing such precious treasures that the city inherited since its birth. Keeping this concern, the project to document the heritage trees was planned with the objective to conserve such treasures and also, to educate the citizens about the importance of protecting our tree wealth.

This project aims to prepare and update a list of trees with heritage status, every five years. The important parameters for inclusion in the coveted Heritage list are age, size, type, historical association or horticultural value of the trees. The mission of the volunteers of Yuvsatta, Chandigarh Tree Lovers (CTL) and Times of India, Chandigarh is to preserve, manage, enhance, and expand a vital collection of plants in an active, urban setting.

One could never imagine that there are more than hundred trees in Chandigarh that could be assigned Heritage Trees status. These are rare assets for any urban city, especially in India. As planned and envisaged, the project on Heritage Trees serves to identify, recognize and conserve the majestic historical trees in the city landscape. The main criteria adopted for identifying a tree as a Heritage tree is by virtue of its age i.e. older than 100 years, from its profile and girth of trunk. However, aesthetic value, abundance, historical significance, cultural, social and educational value are also considered. Additionally, trees that are landmarks of a community and inhabitation, trees in a notable grove, avenue, trees as a habitat for rare species of plants, animals or birds etc. are the other factors which are taken into consideration.

Most of the trees listed as Heritage Trees are in good condition, relatively free of damage and are also sufficiently well-suited for long term preservation. Once endorsed as a Heritage Tree by the Department of Forest & Wildlife, Chandigarh Administration, the selected trees can be promoted for special conservation with respect to their physical state and awareness by the local residents of the area to respect such green wealth of the city. For example, there is an urgent need to the installation of lightning conductors on some of these trees to protect them against damages by lightning. Also it's important to prevent soil erosion or excavation around the root zone of these trees by building earthen platforms of optimum sizes around them.

## ACKNOWLEDGEMENTS

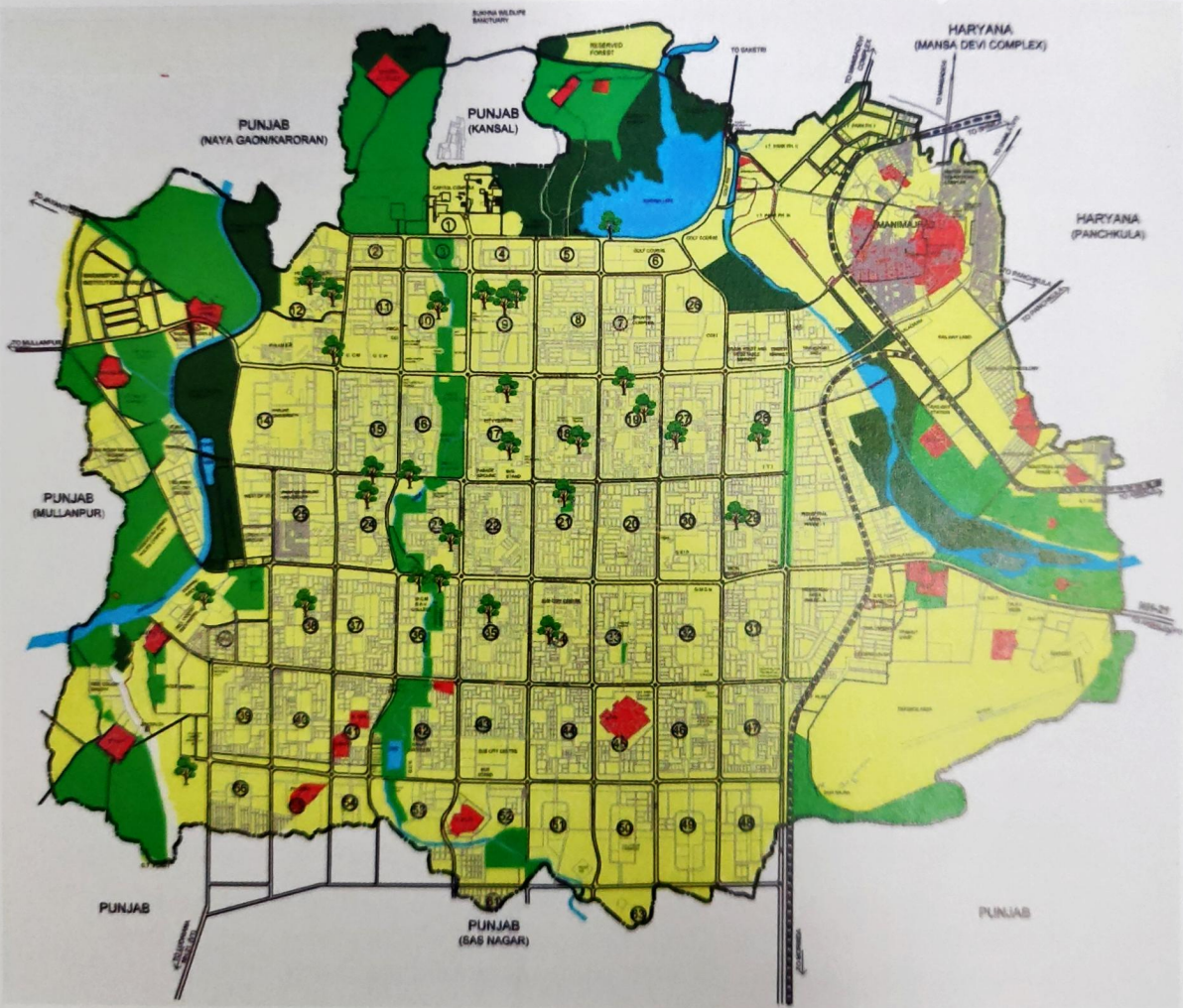
We gratefully acknowledge all those who responded with positive support and with valuable suggestions from their experience. In the documentation of these trees. While preparing this publication we realized that a number of enthusiastic people have contributed extensively in collecting our findings. Those who contributed the most will understand that why footnotes in this booklet have been omitted --not because we think every information is original -- but rather to keep the text brief and readable for lay readers.

First of all we mention our deep debt of gratitude to Mr. Anurag Agarwal, IAS, Former Secretary for Home & Secretary for Environment, Forest & Wildlife, Chandigarh Administration for his constant motivation to speed-up and finalize the details of the heritage trees. We are fortunate that the same amount of support is now continuing under the present Home-cum- Environment Secretary Mr. Arun Kumar Gupta, IAS, Chandigarh Administration. Mr. Santosh Kumar, IFS, Director, Department of Environment and Chief Conservator of Forest & Wildlife, Chandigarh Administration -- a man of tremendous action and positive energy -- has always been very encouraging. We thank all the members of the Chandigarh Tree Lovers, CTL group led by the President, Prof Rajnish Wattas for all the physical data collection and compilation work. To name a few CTL members who led the hard work and toil for the field work and on ground are notably Ms Shelly Mathur, Mr. R. N. Gupta, Dr. Manjit Kaur, Mr. Jagmohan Khanna, Mr. Harbhajan Pathania, Mr. Y. K. Mahajan, Dr. Namita Grover and Mr. D. P. Singh. We want especially to thank Mr. Harsh Mitter, retired IFS, who patiently read drafts of this report and gave us the benefit of his criticism. In particular, we want to thank Dr. Harjit Singh, Former Executive Engineer, Department of Horticulture, Chandigarh Administration who shared his wisdom and technical information with us. Dr. Asish Pal and Mr. Manu Vohra did a commendable job in compiling the data and finishing the final draft of the report. We deeply appreciate the great initiative taken by Yuvsatta group led most ably by Mr. Pramod Sharma that created the first compilation initiative before joining up with CTL.

We would also like to take this opportunity to pay our regards to the old, wise veteran citizens from various parts of the city, priests of various temples and Gurudwaras who recounted the oral history of the heritage trees.

Last but not the least, we gratefully acknowledge the important role played by Times of India under its Live Green mission. Mr. Robin David, Resident editor of the Times of India, Chandigarh has been actively promoting this mission with a vibrant team of dynamic journalists and photo-journalists. Mrs. Kamini Mehta, Ms. Vishakha Chaman, Mr. Arsh Behl, Mr. Ballish Ahuja, Mr. Shantanu Das and Mr. Dinesh Bharadwaj who covered this documentation and in general all the activities of Chandigarh Tree lovers and Yuvsatta through their comprehensive news features made it possible for us to take the eco-message of heritage trees to the citizen of the Tricity area.

# Location of Heritage Trees of Chandigarh



Layout Plan of Chandigarh



**Trail 1:** It encompasses the northern sectors of Chandigarh. One can start at Sukhna Lake, Sector 6, continue in sector 9, 10 and end at sector 12. On bicycle, the trail will require approximately 1 hour to cover all the eight trees as shown in the map. (Serial number 1-8 of the list)



**Trail 2:** One can start at the City Centre, Sector 17 with the peepal tree next to DC office and proceeds to ISBT, 17 and sectors 18,19, 27, 28 29 and ends at Sector 21. On bicycle, the trail will require approximately 1.5 hour to cover all the twelve trees (Serial number 9-17 and 22-24).



**Trail 3:** Starting point is Basanti Devi Sheetala Mata Temple, Sector 24 and proceeds to sectors 23, 34, 35, 36 and ends at sector 38. On bicycle, the trail will require approximately 2 hours to cover all the nine trees (Serial number 18-21 and 25-29).

- *Trees with serial number 30 and 31 at Dadumajra and Maloya village have been kept out of above three trails considering the long distance.*



## 1

**The Lake PEEPAL (Sacred Fig), Sector 6**

On the walkway of Sukhna Lake in Sector 6, no one can miss the magnificent peepal tree. The widespread tree stands along the road about 250 meters distance from the main entrance of the lake. The site has become a resting point and for anyone walking down the lake. For many citizens, it acts as a perfect landmark. The huge tree has a sprawling shady canopy, most of which is leaning towards the lake side.



*Circumference of the trunk (gbh\*) - 20 ft approx.*

*Diameter of the trunk - 6.4 ft approx.*

*Canopy spread - 114 ft approx.*

*Circumference of canopy - 358 ft approx.*

*Height of tree - 75 ft approx.*

*Stem clearance - 9 ft approx.*

*Age\*\* - 150 years approx.*

\* gbh is girth at breast height i.e. trunk measured 1.37 m above the ground level.

\*\* Based upon ocular estimation & local people.



## The Grand Old PEEPAL of Kalibard Village, Sector 9C

2

The largest PEEPAL tree of Chandigarh is in Sector 9C, once Kalibard village. It is located opposite to the Carmel convent school in MC park which used to be a 'toba', pond of the erstwhile village. Currently, three huge PEEPAL trees exist here, the largest standing at centre of the park. The huge tree has round shape silhouette with 14 large branches of about 2 ft width going in all directions offering shelter under its canopy.

*Circumference of the trunk (gbh\*) - 30 ft approx.*

*Diameter of the trunk - 9.5 ft approx.*

*Canopy spread - 130 ft approx.*

*Circumference of canopy - 410 ft approx.*

*Height of tree - 60-70 ft approx.*

*Stem clearance - 12-13 ft approx.*

*Age\*\* - 250 years approx.*

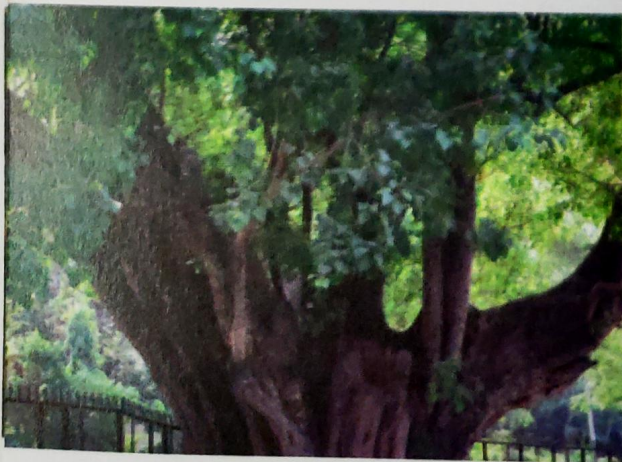




3

### The Grand Old PEEPAL Tree inside the Carmel Convent School, Sector 9B

The tree is being preserved by the school authority and has been provided with a placard to educate the young minds about the importance of trees. This tree is a host to a number of other trees such as Neem, Mahua, Peepal and some flowering plants are growing between its branches. The tree is a perfect teacher to the school students with respect to symbiotic living.



*Circumference of the trunk (gbh\*) - 33 ft approx.*

*Diameter of the trunk - 10.5 ft approx.*

*Canopy spread - 110 ft approx.*

*Circumference of canopy - 345 ft approx.*

*Height of tree - 60-70 ft approx.*

*Stem clearance - 14-15 ft approx.*

*Age\*\* - 250 years approx.*





## PEEPAL Tree, Sector 9A. Opp. House no-101

4

This peepal tree is special due to its height and it can be found along the road side behind the mini secretariat, Punjab. The area around the tree has been covered with concrete and it requires immediate attention to increase its breathing space.

*Circumference of the trunk (gbh\*) - 25 ft approx.*

*Diameter of the trunk - 7.9 ft approx.*

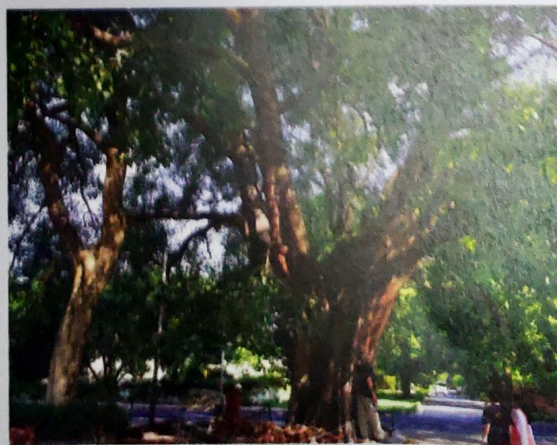
*Canopy spread - 105 ft approx.*

*Circumference of canopy - 330 ft approx.*

*Height of tree - 100 ft approx.*

*Stem clearance - 14 ft approx.*

*Age\*\* - 170-180 years approx.*





## 5 Majestic PEEPAL, Sector 10

A majestic PEEPAL tree stands at the exit gate of Hotel Mount View in Sector 10A. It's well maintained and preserved with earthen platform to support the main trunk.



*Circumference of the trunk (gbh\*) - 20ft approx.*

*Diameter of the trunk - 6.4 ft approx.*

*Canopy spread - 85 ft approx.*

*Circumference of canopy - 267ft approx.*

*Height of tree - 75 ft approx.*

*Stem clearance - 10 ft approx.*

*Age\*\* - 150 years approx.*



## PEEPAL Grandeur of Shehzadpura, PEC, Sector 12

6

This big PEEPAL tree is situated in the park of the campus of RGNIYD Regional Centre, INSIDE PEC campus in Sector-12 Chandigarh. This area was the old Shehzadpur village which now inhabited the area of PGI and PEC. This tree has lot of open ground space around to grow and is frequented by visitors who pray and frolic in its shade. There are many young trees around this particular tree in the park.

*Circumference of the trunk (gbh\*) - 27 ft approx.*

*Diameter of the trunk - 8.6ft approx.*

*Canopy spread - 130 ft approx.*

*Circumference of canopy - 408 ft approx.*

*Height of tree - 50-60 ft approx.*

*Stem clearance - 12 ft approx.*

*Age\*\* - 200 years approx.*

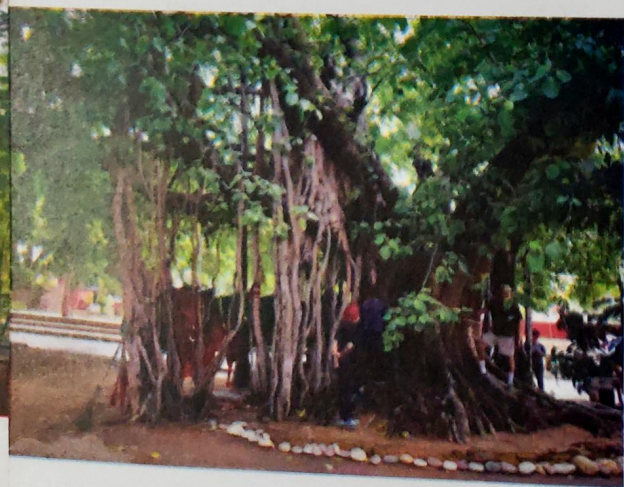


*\*Including buttresses*



## 7 BANYAN Tree, Sector 12

It is hard to miss the centuries old huge BANYAN Tree behind the Chandigarh College of Architecture building in the PEC campus. This used to be the landmark of the erstwhile Shehzadpur village. Many of its aerial roots are grounded at a distance from the main stem, thereby giving support to the heavily spreading branches. The area around this tree is also free of construction. The tree is revered by the devotees and is adorned by large brass bells, red scarfs and idols of God which is required to be regulated to avoid damage to the tree.



*Circumference of the trunk (gbh\*) - 24 ft approx.*

*Diameter of the trunk - 7.6 ft approx.*

*Canopy spread - 145 ft*

*Circumference of canopy - 445 ft approx.*

*Height of tree - 80 ft approx.*

*Stem clearance - 10 ft approx.*

*Age\*\* - 350 years approx.*



## THE BARGAD OF "GUGA MARHI" OF PGI

8

Much revered Guga Marhi Pir Mandir is located just outside the south wall of PGI in the corner near to the PGI roundabout. This place boasts of three old trees, one is the holy PEEPAL and two old BARGAD trees. A Chauntra is built around it and little open space exists around it. The other two trees are comparatively quite young.

*Circumference of the trunk (gbh\*) - 21 ft approx.*

*Diameter of the trunk - 6.6 ft approx.*

*Canopy spread - 63 ft approx.*

*Circumference of canopy - 197 ft approx.*

*Height of tree - 10 ft approx.*

*Stem clearance - 50-55 ft approx.*

*Age\*\* - 250 years approx.*

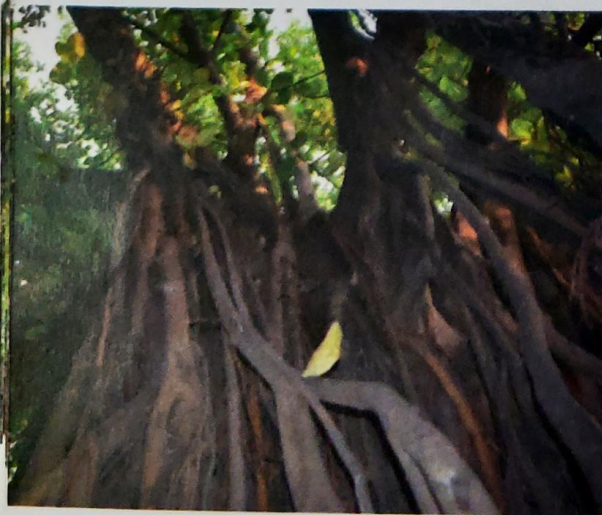




9

## BARGAD Tree behind Sector 17 ISBT

The present Sector 17 is in the land of erstwhile village of Roorkee. The village was famous for its peepal trees which are still found in abundance in the premises of the sector 17 plaza. The planners of the city accommodated these trees by leaving the trees between buildings and in plazas resulting in a good blend of greenery and concrete. The largest tree of sector 17 is located in the scooter parking place behind the ISBT and is a huge 'BARGAD'. The aerial roots have been trimmed and unable to reach the ground. There is a scooter parking place underneath the tree utilizing its shades.



*Circumference of the trunk (gbh\*) - 57 ft approx.*

*Diameter of the trunk - 18 ft approx.*

*Canopy spread - 110 ft approx.*

*Circumference of canopy - 345 ft approx.*

*Height of tree - 40-50 ft approx.*

*Stem clearance - 15 ft approx.*

*Age\*\* - 250 years approx.*



## The Old PEEPAL Tree in front of DC office Sector-17

10

In Sector 17-B plaza, adjacent to the DC office and extending into the plaza behind the banking square one can find a set of huge PEEPAL trees. The old trees in this area are well maintained and have been properly secured by the administration by providing big size earthen platform around the trees. Lot of people, vendors and labors takes shelter under the shade. The oldest peepal tree is of 200 years of age.

*Circumference of the trunk (gbh\*) - 18 ft approx.*

*Diameter of the trunk - 6 ft approx.*

*Canopy spread - 85-93 ft approx.*

*Circumference of canopy - 250 ft approx.*

*Height of tree - 35-40 ft approx.*

*Stem clearance - 8 ft approx.*

*Age\*\* - 200 years approx.*





11-14

### **Magnificent BANYAN and PEEPAL Trees, Sector 18D**

The Govt. Girls Model Sr. Secondary School is maintaining a number of old banyan and peepal trees. Students from the school flock under the shades of the tree during recess. An old and majestic banyan tree stands tall at one corner of the school. It's difficult to find the main trunk of this tree and more than 100 aerial roots from the canopy, penetrating the ground growing into multiple woody, pillar-like trunks. The tree, with a thick canopy of evergreen leaves is covering a very wide area to form its own circle with roots aggressively intertwining the trunk and fuse together, creating a latticework. It has many widely distributed and rooted aerial roots with circumference of 146 ft.



### **Banyan Tree at the corner**

*Circumference of the trunk = No main trunk*

*Diameter of the trunk = N.A.*

*Canopy spread = 80 ft approx.*

*Circumference of canopy = 251 ft approx.*

*Height of tree = 40-50 ft approx.*

*Age = 170 years approx.*



Nearby in the school premises, there are also another banyan tree and two peepal trees in a row.



### **1st Peepal Tree in row**

*Circumference of the trunk (gbh\*) - 15 ft approx.*

*Diameter of the trunk - 4.7 ft approx.*

*Canopy spread - 81 ft approx.*

*Circumference of canopy - 255 ft approx.*

*Height of tree - 50 ft approx.*

*Stem clearance - 7.5 ft approx.*

*Age\*\* - 125 years approx.*

### **2nd Banyan Tree in row**

*Circumference of the trunk (gbh\*) - 16 ft approx.*

*Diameter of the trunk - 5.1 ft approx.*

*Canopy spread - 83 ft approx.*

*Circumference of canopy - 260 ft approx.*

*Height of tree - 50-55 ft approx.*

*Stem clearance - 8 ft approx.*

*Age\*\* - 125 years approx.*

### **3rd Peepal Tree in row**

*Circumference of the trunk (gbh\*) - 17 ft approx.*

*Diameter of the trunk - 5.1 ft approx.*

*Canopy spread - 84 ft approx.*

*Circumference of canopy - 264 ft approx.*

*Height of tree - 55-60 ft approx.*

*Stem clearance - 8 ft approx.*

*Age\*\* - 125 years approx.*



## 15 The Grand MANGO Tree in Sector 19B

A mango tree of Chandigarh exists inside the premises of 'Vatika School for Deaf & Dumb Children' in Sector 19-B. The lone tree of 'Vatika School' playground welcomes the incoming students and guests like a grand old man.



*Circumference of the trunk (gbh\*) - 20 ft approx.*

*Diameter of the trunk - 6.4 ft approx.*

*Canopy spread - 80 ft approx.*

*Circumference of canopy - 408 ft approx.*

*Height of tree - 45-50 ft approx.*

*Stem clearance - 7 ft approx.*

*Age\*\* - 150 years approx.*



## PEEPAL Tree, Sector 19A

16

Outside the entrance of 'Brahmrishi Yoga College' of Sector 19-A, a huge PEEPAL of 6.4 ft diameter trunk stands as a reminder of the grandeur of village NAGLA. The tree has a canopy of 102 ft and all open space inside the campus.

*Circumference of the trunk (gbh\*) - 20 ft approx.*

*Diameter of the trunk - 6.4 ft approx.*

*Canopy spread - 102 ft approx.*

*Circumference of canopy - 320 ft approx.*

*Height of tree - 65-70 ft approx.*

*Stem clearance - 7 ft approx.*

*Age\*\* - 150 years approx.*





17

## MANGO Trees of Village Roorkee, Sector 21A

Village Roorkee was one of the oldest villages uprooted for making way to planned sector 21 of Chandigarh. In the parrot park of Sector 21-A, there was a cluster of mango, neem and other trees which attracted hundreds of parrots who had made these trees their homes. This mango tree has trunk of approx. 3.7 feet diameter in one corner of the park. It has numerous branches and tree hollows which attract birds. Parrots do not make nests but only occupy the tree hollows which are only to be found in mango, peepal, banyan and such trees which live long enough to make hollows. Also these trees provide fruit to the birds.



*Circumference of the trunk (gbh\*) - 11.6 ft approx.*

*Diameter of the trunk - 3.7 ft approx.*

*Canopy spread - 78 ft approx.*

*Circumference of canopy - 245 ft approx.*

*Height of tree - 70 ft approx.*

*Stem clearance - 7.5 ft approx.*

*Age\*\* - 100 years approx.*



## **Giant PEEPAL of Govt. Model Sr. Sec. School, Sector 23**

**18**

A giant 'PEEPAL' stands right in front of the building of Government Model Senior Secondary School, Sector 23A, Chandigarh. It belongs to an old village Kailard. The beautiful tree is bound on all sides by road and the school building.

*Circumference of the trunk (gbh\*) - 16 ft approx.*

*Diameter of the trunk - 5 ft approx.*

*Canopy spread - 100 ft approx.*

*Circumference of canopy - 314 ft approx.*

*Height of tree - 65 ft approx.*

*Age\*\* - 150 years approx.*



19

### **PEEPAL at the entrance of the Government Nursery, Sector 23 C**

This well-built tree probably of an old village Bhijwara is presently at one of the oldest Government nursery of Chandigarh.

*Circumference of the trunk (gbh\*) - 20 ft approx.*

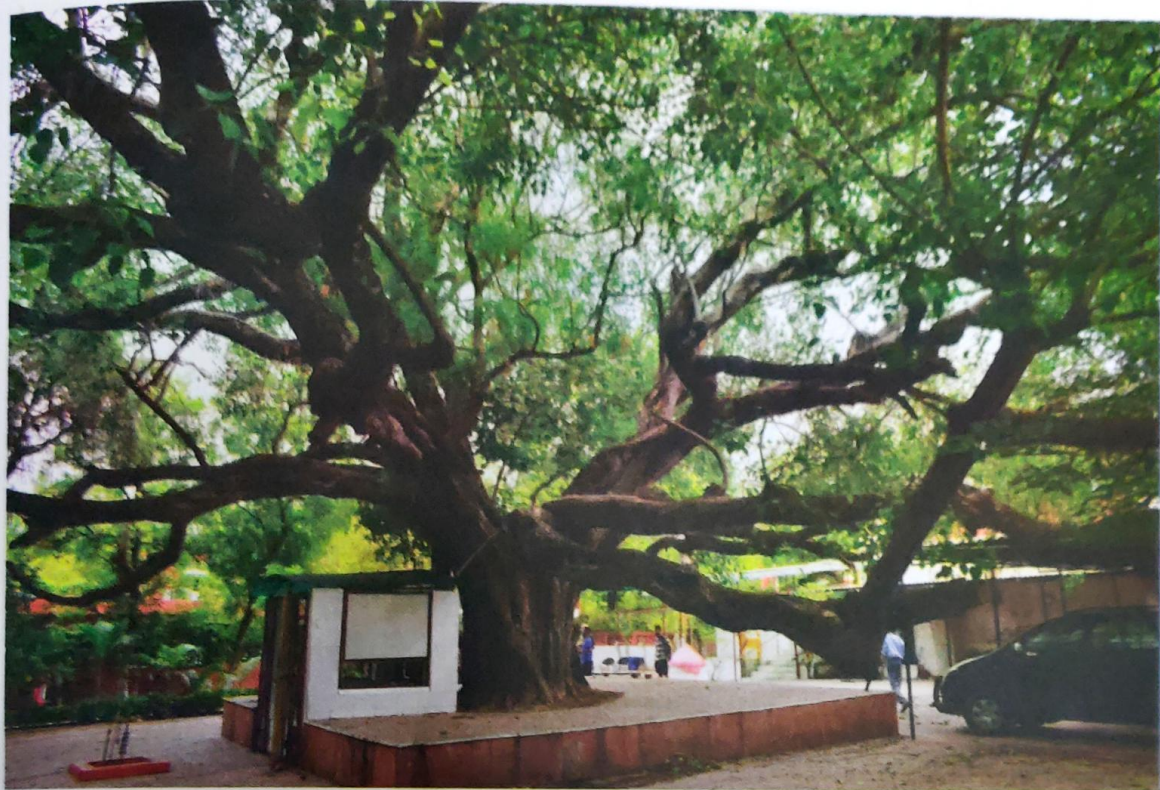
*Diameter of the trunk - 6.4 ft approx.*

*Canopy spread - 80 ft approx.*

*Height of tree - 70 ft approx.*

*Stem clearance - 12 ft approx.*

*Age\*\* - 150 years approx.*



20

## THE PEEPAL of Basanti Devi Sheetala Mata Temple, Sector 24B

This is a historical temple of village 'Kailard'. At one time the area was infected with the disease 'MATA' and people of all places flocked to the temple for 'treatment'. Right in the centre of the temple at the entrance is a huge PEEPAL tree having 27 huge branches emanating from the trunk and distribute uniformly in all directions. The tree is a favorite haunt of parrots, squirrels, doves and crows some of whom come here at dusk and dwell in the various hollows and crevices of the holy tree

*Circumference of the trunk (gbh\*) - 20 ft approx.*

*Diameter of the trunk - 6.4 ft approx.*

*Canopy spread - 110 ft approx.*

*Circumference of canopy - 345 ft approx.*

*Height of tree - 50 ft approx.*

*Stem clearance - 10 ft approx.*

*Age\*\* - 200 years approx.*





## 21 **BARGAD at Indira Holiday Home, Sector 24B**

The Indira Holiday Home in Sector 24-B (erstwhile village Kailard) is a great attraction for children for its toy train, green parks and school. The park at the backside is a great eco-spot and is very near to the Pracheen Shiv Mandir. Among the four old trees, the main attraction is a thick BARGAD along the northern boundary of the home (one of the largest Bargad in town). The tree has five huge main trunks and very wide canopy. There are free spaces all around and the aerial roots have space for proliferation. The place should be declared a heritage site and proper boards should be erected to educate the children.



*Circumference of the trunk (gbh\*) - 27 ft approx.*

*Diameter of the trunk - 8.6 ft approx.*

*Canopy spread - 95 ft approx.*

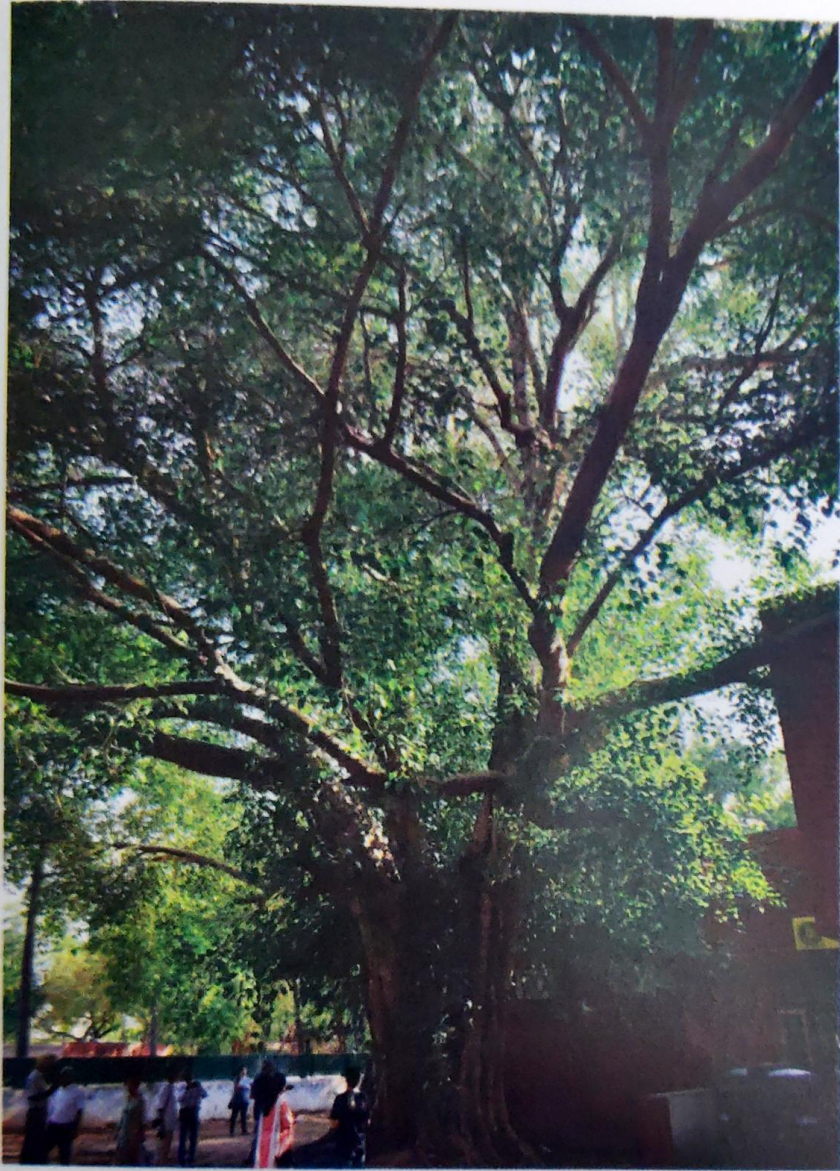
*Circumference of canopy - 298 ft approx.*

*Height of tree - 50 -55 ft approx.*

*Stem clearance - 10 ft approx.*

*Age\*\* - 200 years approx.*





## PEEPAL Tree, Sector 27D

22

In the campus of community centre, sector 27D, a huge PEEPAL tree with a diameter of 6.7 ft and almost ball like spherical silhouette canopy adorns the place. The tree has a canopy spread of over 105 ft.

*Circumference of the trunk (gbh\*) - 21 ft approx.*

*Diameter of the trunk - 6.7 ft approx.*

*Canopy spread - 105 ft approx.*

*Circumference of canopy - 330 ft approx.*

*Height of tree - 75-80 ft approx.*

*Stem clearance - 12 ft approx.*

*Age\*\* - 110 years approx.*



## 23 Grand Old BARGAD of Gurdaspur village, Sector 28

The present day Sector 28 once used to be the village of Gurdaspur. A Government Model School exists now in Sector 28C, the erstwhile centre of the village. Inside the school campus, there is a grand old BARGAD with widely distributed and aerial roots at four places. The circumference of the aerial roots is ranging from 5ft to 6ft. The tree has five main branches each 2.5 to 3 feet wide. The tree is on an open ground and is witness to the various games of children from the school.



*Circumference of the trunk (gbh\*) - 24 ft approx.*

*Diameter of the trunk - 7.6 ft approx.*

*Canopy spread - 94 ft approx.*

*Circumference of canopy - 295 ft approx.*

*Height of tree - 70 ft approx.*

*Stem clearance - 8 ft approx.*

*Age\*\* - 200 years approx.*



## The BANYAN Tree of Kanthala village, Sector 29 D

24

Some parts of Sector 29 and Sector 30 encompass the erstwhile village 'Kanthala'. At present opposite Baba Balaknath Temple in Sector 29D market's parking stands a well build banyan tree, must be around 250 years old, with many shoots trying to touch the ground

*Circumference of the trunk (gbh\*) - 25 ft approx.*

*Diameter of the trunk - 8 ft approx.*

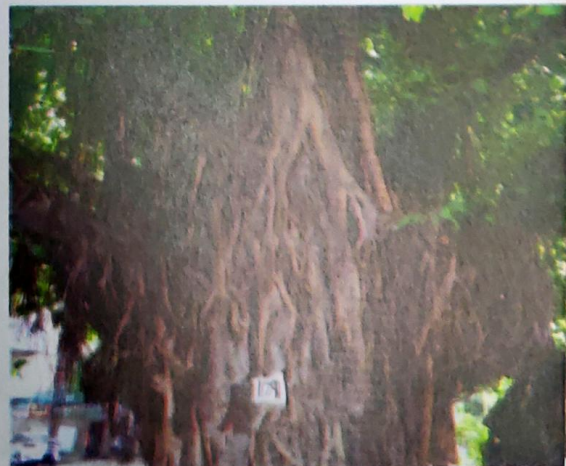
*Canopy spread - 100 ft approx.*

*Circumference of canopy - 314 ft approx.*

*Height of tree - 55 ft approx.*

*Stem clearance - 9 ft approx.*

*Age\*\* - 250 years approx.*





25

### The BARGAD at Gurudwara Shri Tegh Bahadur Sahib, Sector 34D

This gurdwara of Sector 34-D lies in the land of village Madhreyan and is an old historic gurdwara. At the northern corner of the gurdwara a beautiful old 'BARGAD' tree is located. A marble platform is built around the tree with no space for the tree to prosper further. One side is the Gurdwara building and the other is a parking place and road, all concretized.



*Circumference of the trunk (gbh\*) - 23 ft approx.*

*Diameter of the trunk - 7.3 ft approx.*

*Canopy spread - 70 ft approx.*

*Circumference of canopy - 220 ft approx.*

*Height of tree - 45 ft approx.*

*Stem clearance - 6 ft approx.*

*Age\*\* - 110 years approx.*



26

### The MANGO Tree of Sector 35

In Sector 35-A, opposite to the Sector 35-D market and adjacent to the MC park, a huge mango tree stands guard. It has a wide trunk with thick branches extending like huge arms to all sides. It has obtained a mature height and a good canopy spread. The tree has free space all around. A young PEEPAL stands nearby to lend company.

*Circumference of the trunk (gbh\*) - 16.5 ft approx.*

*Diameter of the trunk - 5.25 ft approx.*

*Canopy spread - 62 ft approx.*

*Circumference of canopy - 195 ft approx.*

*Height of tree - 60 ft approx.*

*Age\*\* - 100-120 years approx.*





27

### **The PEEPAL tree of ISKCON Temple, Sector 36B**

A beautiful well-maintained Peepal tree of 6 feet trunk exists adjoining the main entrance of ISKCON Temple of Sector 36B. It stands tall guarding the main entrance of temple and giving shade to devotees.



*Circumference of the trunk (gbh\*) - 20 ft approx.*

*Diameter of the trunk - 6.4 ft approx.*

*Canopy spread - 90 ft approx.*

*Circumference of canopy - 283 ft approx.*

*Height of tree - 65-70 ft approx.*

*Stem clearance - 6.5 ft approx.*

*Age\*\* - 150 years approx.*



28

### **The Entrolobium Timbouva of Hibiscus Garden, Sector 36A**

A majestic Entrolobium Timbouva tree stands along with two smaller trees of same species in the park of Sector 36A. The trunk diameter is 6 ft. and at a height of 12 ft dozens of branches shoot off. The shade of the tree spreads up to 114 ft. The unique surface roots are visible for up to a distance of 15-20 ft away from the trunk.

*Circumference of the trunk (gbh\*) - 19 ft approx.*

*Diameter of the trunk - 6 ft approx.*

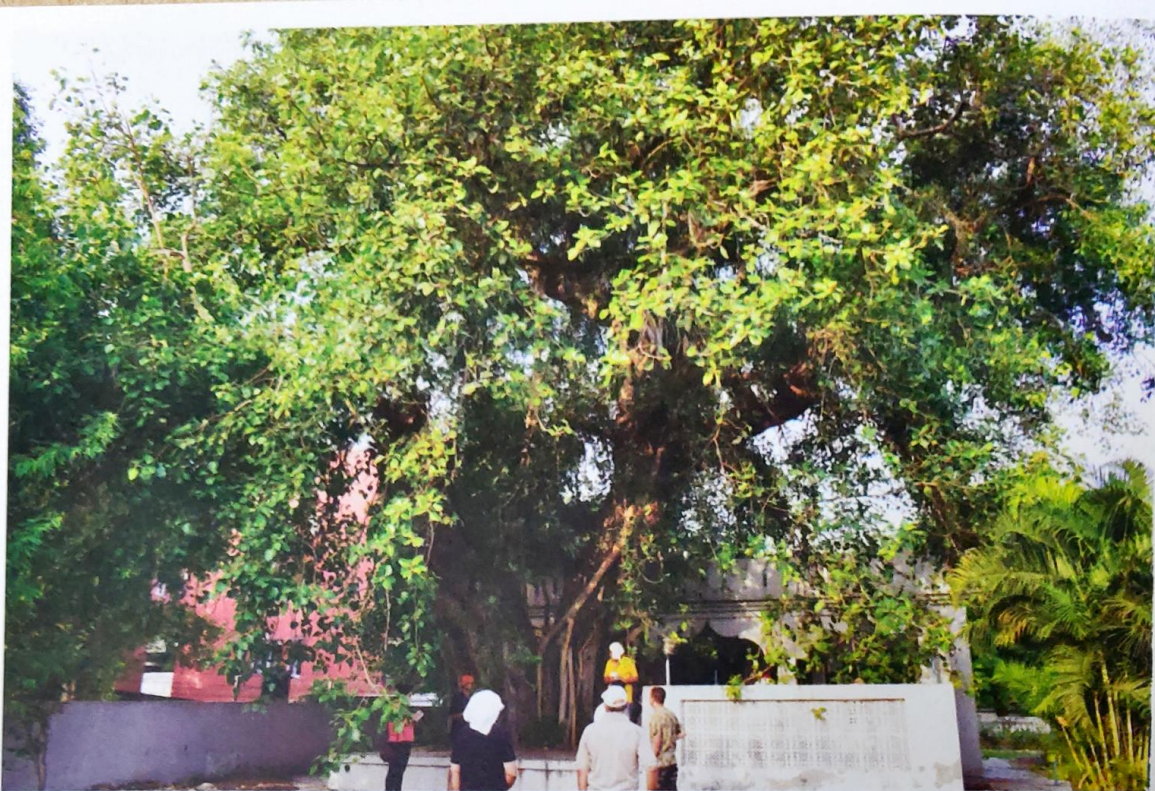
*Canopy spread - 114 ft approx.*

*Circumference of canopy - 358 ft approx.*

*Height of tree - 80 ft approx.*

*Stem clearance - 12 ft approx.*

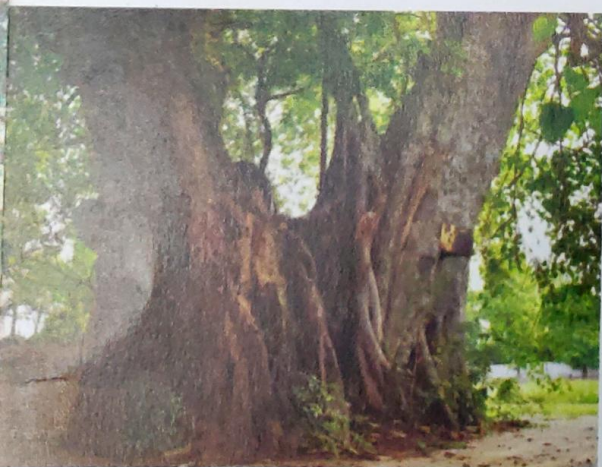




29

## The BARGAD of Gurudwara Shahpur, Sector 38B

The homes and land of village Shahpur existed in the present sector 38. The historic gurdwara and the kheda existed here since the inception of the village some 350 years back. The same were upgraded in 1946 in the planning of Chandigarh. In the gurdwara complex in a corner exists one of the oldest and widest bargad trees of the city. The holy bargad & peepal duo have a combined width of 8 feet. S. Tara Singh, a member of gurdwara committee, recounts that there was a well existing from the times of the Sikh Gurus and these trees are perhaps from that era. A marbled chauntra is built around the tree which has on one side a building and other is open space. The canopy is now small due to age.



*Circumference of the trunk (gbh\*) - 31 ft approx.*

*Diameter of the trunk - 9.87 ft approx.*

*Canopy spread - 61 ft approx.*

*Circumference of canopy - 190 ft approx.*

*Height of tree - 70 ft approx.*

*Age\*\* - 300 years approx.*





## The Ancient BARGAD of village Dadumajra

30

Dadumajra is one of the villages in the periphery of UT whose land was acquired for the capital project. However, homes, temples, gurdwaras and the ponds (chappar or toba) stayed as before. The pond of Dadumajra is adorned by a majestic BARGAD which is claimed to be 300 yrs old. The beauty of the tree's trunk encircled artistically by the tree's own prop roots remarkable. A square platform is built around the tree and the surrounding free space is now made of concrete to serve as a site for festivals and marriages.

*Circumference of the trunk (gbh\*) - 20 ft approx.*

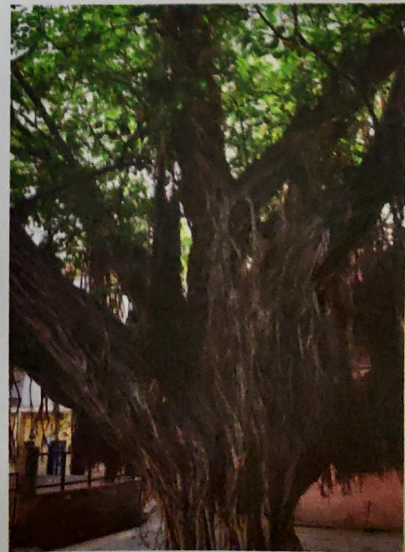
*Diameter of the trunk - 6.05 ft approx.*

*Canopy spread - 65 ft approx.*

*Circumference of canopy - 204 ft approx.*

*Height of tree - 60 ft approx.*

*Age\*\* - 300 years approx.*





31

## The Grand MANGO of Maloya

Part of land of village Maloya falling west of the Patiala Ki Rao choe was acquired by administration and a sabzi mandi has been established. In the southern corner, a religious place, Dudhadhari Ashram is situated in the midst of mango orchards. The place was discovered to be sacred by Shri Dudhadhari Maharaj of Haridwar in 1978, who built the Ashram here. A 100-120 years old mango tree stands at the center of the Ashram. The tree is about 5 feet in diameter, and has 15 large branches extending into all directions. A fire some time back destroyed a part of the tree.



*Circumference of the trunk (gbh\*) - 15 ft approx.*

*Diameter of the trunk - 4.8 ft approx.*

*Canopy spread - 60 ft approx.*

*Circumference of canopy - 188 ft approx.*

*Height of tree - 60 ft approx.*

*Age\*\* - 100-120 years approx.*

## RECOMMENDATIONS FOR UPKEEP & PROTECTION

In the Indian culture, trees and shrubs are considered as sacred. Nowhere else in the world, do trees receive so much veneration and love as accorded to them in India. Also our countryside and forests are very rich in diversity providing us with food, fodder and medicine. We have to continue to maintain these gifts of nature.

For the individual heritage trees the following recommendations are made for their upkeep and protection:

1. That the inhabitants do not cut off the aerial roots of trees like Banyan and enough ground space is provided for these roots to take root in the earth.
2. That the branches of the trees are not cut off by villagers or public for undue purposes. Also no artificial lighting exists near these trees during the night time as this interferes with the photosynthesis of the tree and disturbs the life of resident birds and small animals like squirrels.
3. Installation of lightening conductors to save them from possible atmospheric lightening attack.
4. Construction of an Earthen platform, i.e.: Platform, around the trees so that the tree is dignified and people can sit underneath and enjoy the shade.
5. Installation of a signboard in Hindi / Punjabi highlighting the history of the heritage tree.
6. Installation of wooden swings hanging from thick branches of some of these and other trees. When children swing and play under these trees, they will respect their importance and beauty all the more.
7. The original village 'Kheda' sites exist in the city. These are invariably associated with trees and places of worship. The Chandigarh Administration can help the village committees to preserve these areas by providing them with funds and land.

"That's just what Chandigarh Heritage Trees are all about. They're a slice of life standing sentinel to remind and teach us about our past and inspire us for our future."

## DISCLAIMER

This is to bring to the reader's notice that estimated age of each heritage tree is based upon ocular estimations and the information collected from local people. No scientific method was adopted in the age calculation. All rights are reserved with Department of Forests & Wildlife, UT Administration Chandigarh. This booklet is brought for the purpose of compilation, recreation, education and awareness only, it shall not be used in any court of law or otherwise.

Publisher

**Department of Forests & Wildlife**  
Chandigarh Administration



---

**Chandigarh Tree Lovers (Regd.)**

Mobile : 9815008383, 9814016899

E-mail : [chandigarhtreelovers@gmail.com](mailto:chandigarhtreelovers@gmail.com)

facebook: <https://www.facebook.com/CHDTreeLovers/>